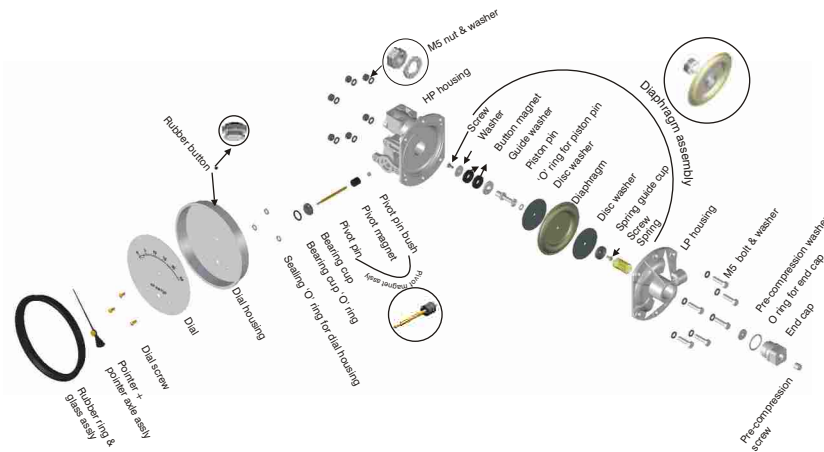


# MAGNETIC™

## GAUGE & GAUGE+SWITCH



**ΔP Range :** 0 to 25 upto 1250 mm of water  
0 to 1 upto 50 inch of water



### SPECIFICATIONS :

Accuracy	±3% of the FSD (Ascending)
Migration	No migration ; Zero leakage from high to low port
Range	0-25 to 0-1250 mm of water
First marking on the scale	10 % of the FSD
Sensing element	Diaphragm
Wetted parts	Diaphragm, body material, SS 302 spring & ceramic magnet
Case material	Stainless steel (SS 304)
Dial size in inch (mm)	1 1/2" (Std.) 4 1/8" (on request 4.5" (115mm) & 6" (150mm) Front Flange
Mounting	Flush (Std.), surface & 2" pipe mounting on request
Maximum working pressure	2.4 bar/35 psi
Maximum process temperature	60° C
Body material	Engineering polymer
Seals/Diaphragms	Buna-N
Window	Float glass (Std.), toughened glass & acrylic on request.
Connection	1/8" NPT (F) Std
Porting	Inline or back (user to select)
Over range protection	Up to the max. working pressure from high side
Protection for gauge & switch	IP 65

### Options

- Customer logo
- Dual scale
- Colour band

### Switches (Adjustable in 40-80% of FSD)

- 1 or 2 SPSTs with a DIN plug
- 1 SPDT with a DIN plug

### COMBINATIONS

#### Gauge



#### Switch



#### Gauge+switch (with a DIN plug on top)

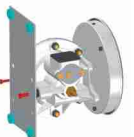


### MOUNTING BRACKETS

#### Gauge (Flush/Panel mounting)



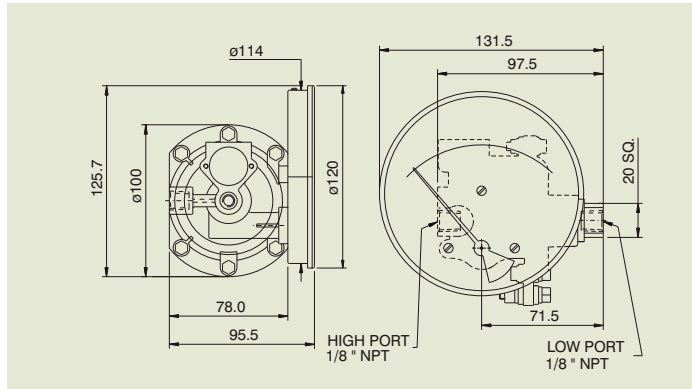
#### Gauge (Surface mounting)



#### Gauge (2" Pipe mounting)

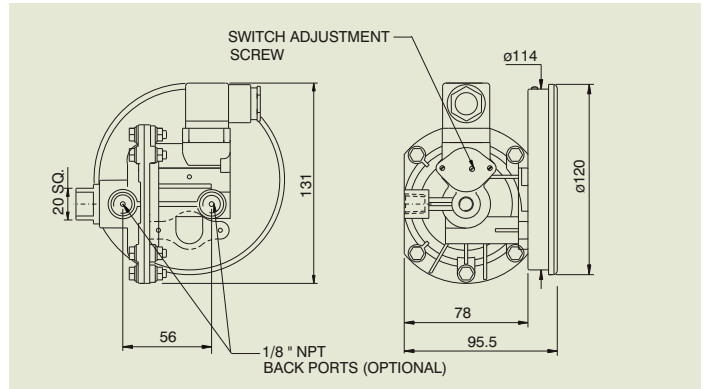


## STANDARD DIMENSIONS

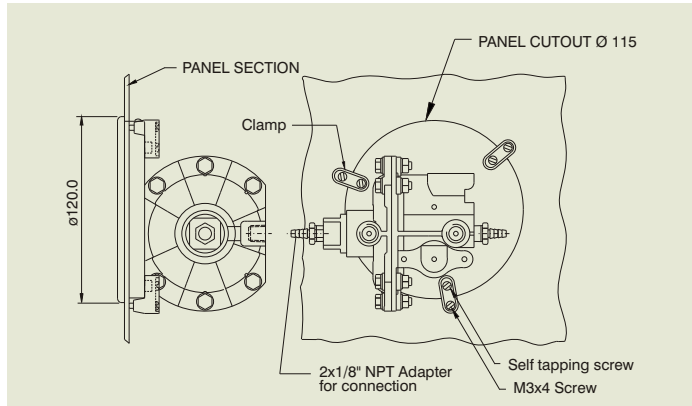


This instrument with its off-center profile can still be easily inserted in a 115 mm panel cutout.

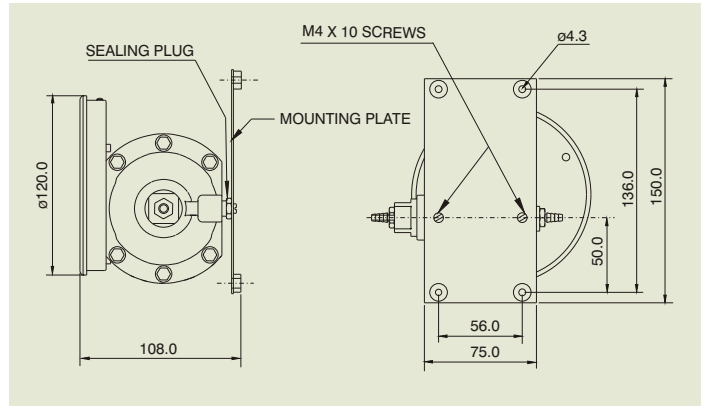
## GAUGE+SWITCH WITH REED CONTACTS WITH A DIN PLUG



## FLUSH MOUNTING DETAILS



## SURFACE MOUNTING DETAILS



### SPST specification:

10 VA AC or DC (max)  
150 V AC or DC (max)  
0.5 Amp AC or DC (max)

### SPDT specification:

5 VA AC or DC (max)  
175 V AC or DC (max)  
0.25 Amp AC or DC (max)

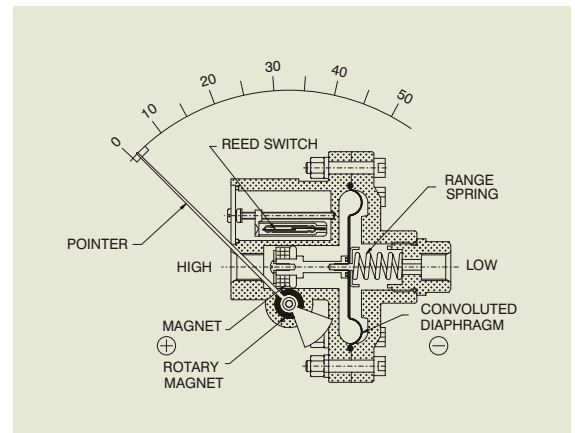
### Applications :

- Monitor air-handling units.
- Measurement of fan & blower pressure.
- Monitor condition of the filter on laminar flow devices.
- Pressure drop across filters.
- Pressure drops across orifice plate for flow determination.
- Level measurement.
- Spinning machines.

### Standard Accessories:

- Two nylon adaptors for tube connection to in-line or back ports.
- Flush mounting kit.
- Two plugs for sealing the port holes (in-line or back) when not in use.

## OPERATING PRINCIPLE :



High and Low pressures are separated by a sensor assembly consisting of a magnet, diaphragm and a range spring. The difference in pressure causes the assembly to move in proportion to the change against the range spring.

A rotary magnet, located in a separate body compartment and isolated from the acting pressures, is rotated by magnetic coupling as per the linear movement of the sensor assembly. A pointer attached to the rotary magnet indicates differential pressure on the dial.

## Standard Ranges

Range	Least count	Range	Least count
0 - 25mm of water	0.5 mm	0 - 250mm of water	5.0 mm
0 - 50mm of water	1.0 mm	0 - 375mm of water	7.5 mm
0 - 75mm of water	2.5 mm	0 - 500mm of water	10.0 mm
0 - 100mm of water	2.5 mm	0 - 750mm of water	15.0 mm
0 - 125mm of water	2.5 mm	0 - 1000mm of water	25.0 mm
0 - 150mm of water	3.0 mm	0 - 1250mm of water	25.0 mm
0 - 200mm of water	4.0 mm		

Other ranges, units and options are manufactured on request.

Specifications are subject to change without prior notice and any obligation on the part of the manufacturer.

# HEBIG

**MANOMETER (INDIA) Pvt. Ltd.**  
MANU MANSION,  
16, SHAHID BHAGATSINGH ROAD,  
MUMBAI - 400 023.  
Tel. : 2266 2076 / 2266 2942  
Fax: 91 - 22 -2266 2397  
E-mail: manometer@vsnl.com  
www.manometerindia.com